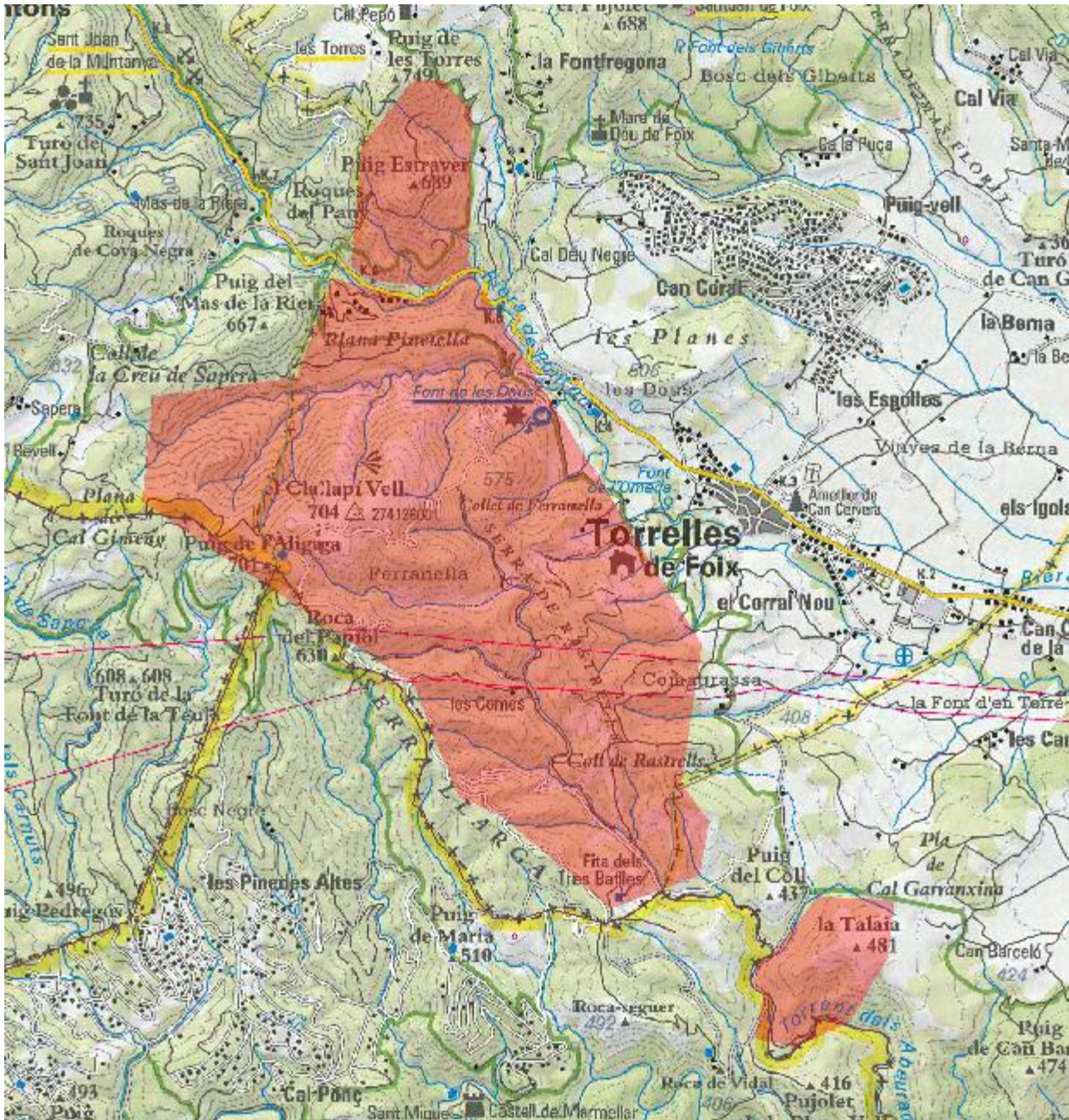
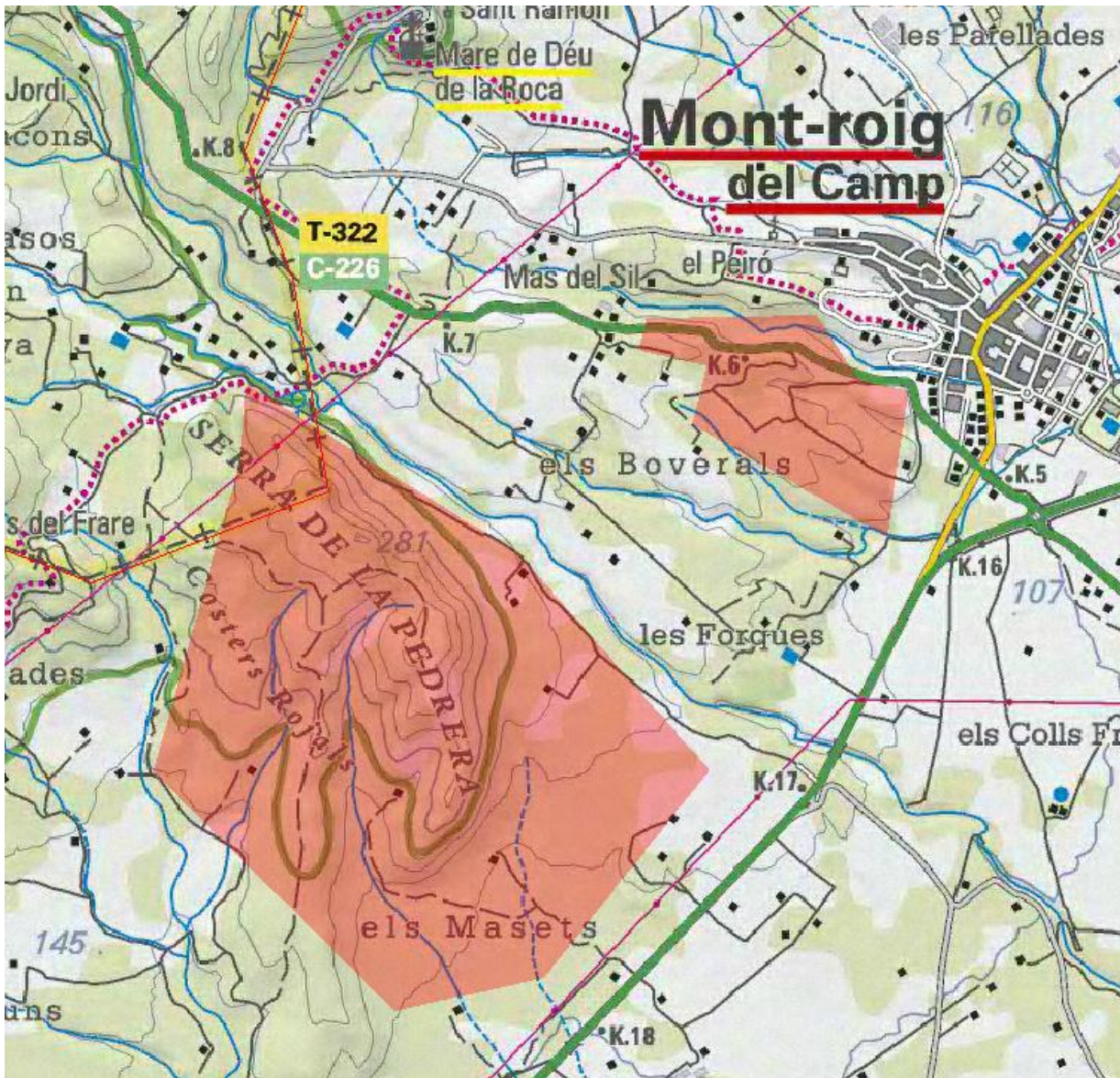
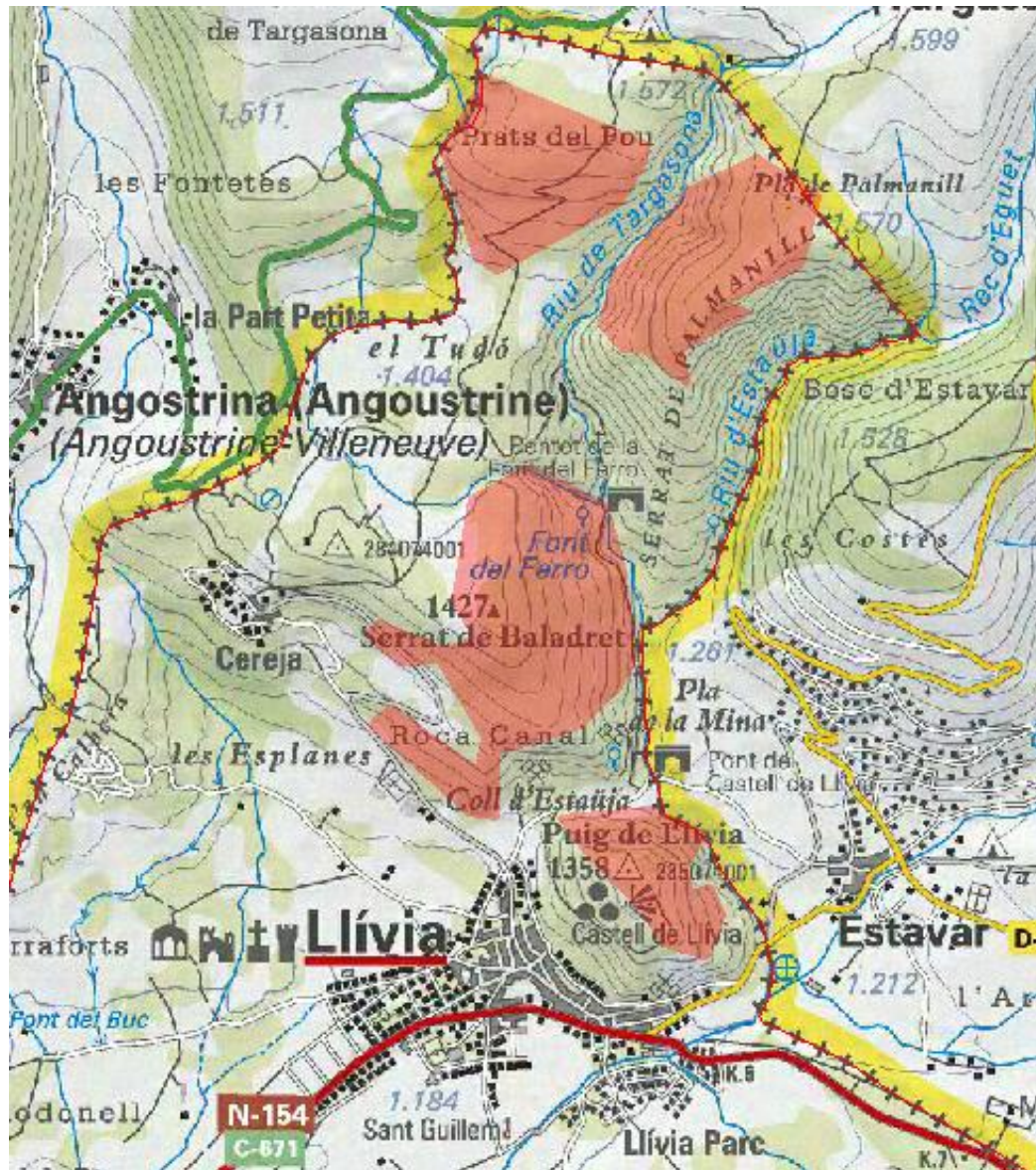
 Zones de tractament de control de la processonària 2016



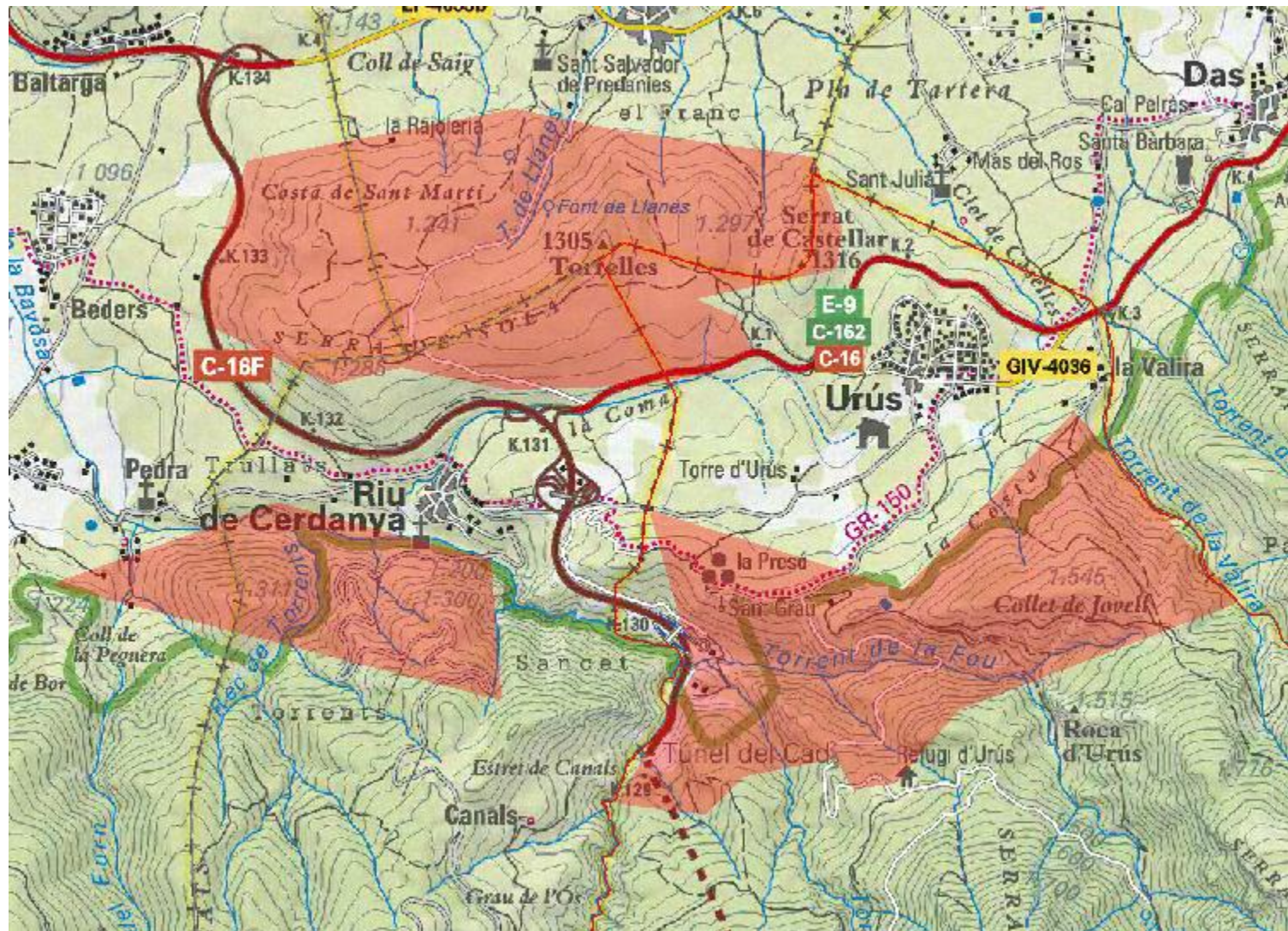
ALT PENEDÈS:
Torrelles de Foix, Pontons,
St Martí Sarroca: 600 ha
(Helicòpter)



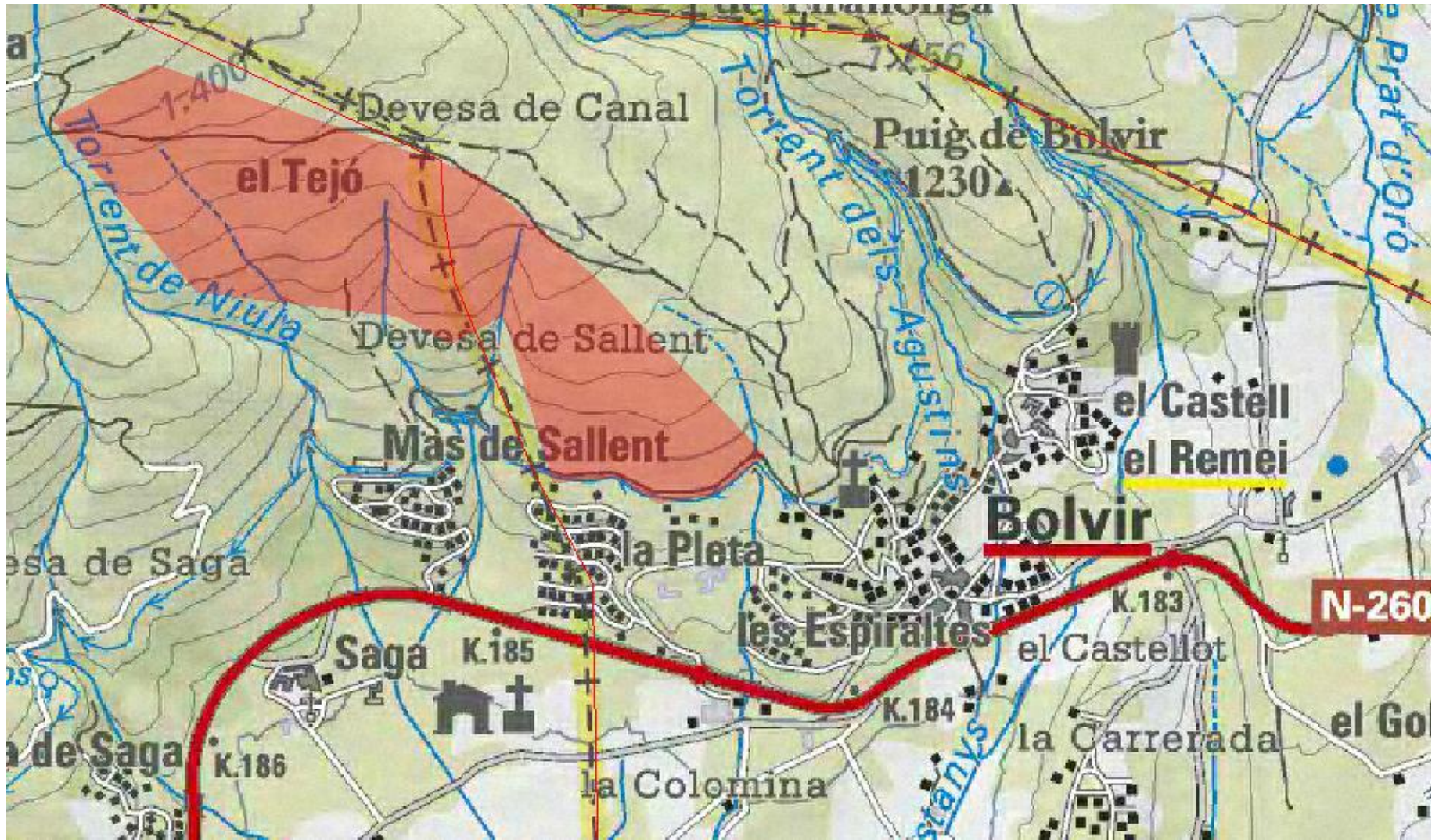
BAIX CAMP:
Mont-roig del Camp 200 ha
(Helicòpter)



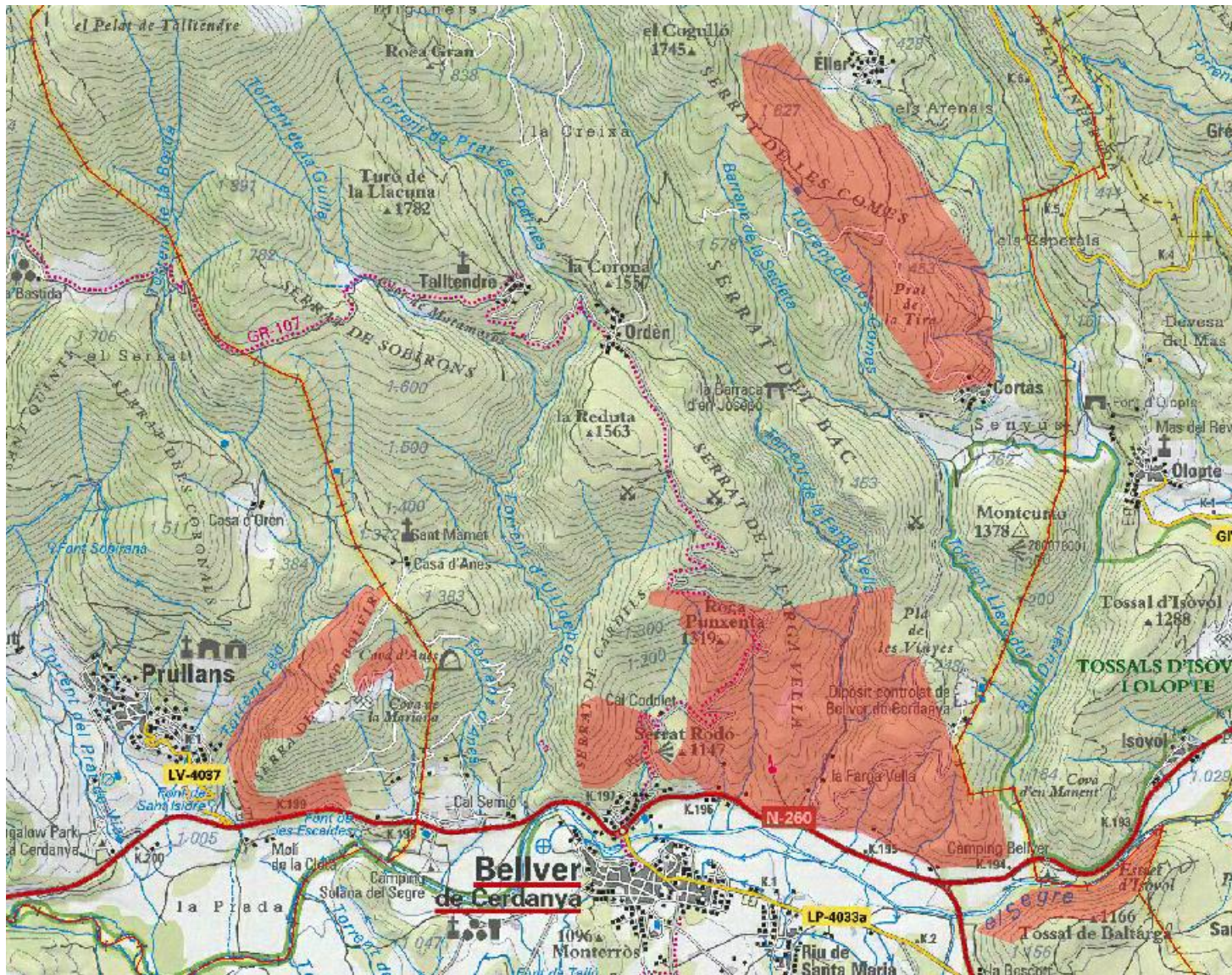
CERDANYA:
Llívia 200 ha
(Helicòpter)



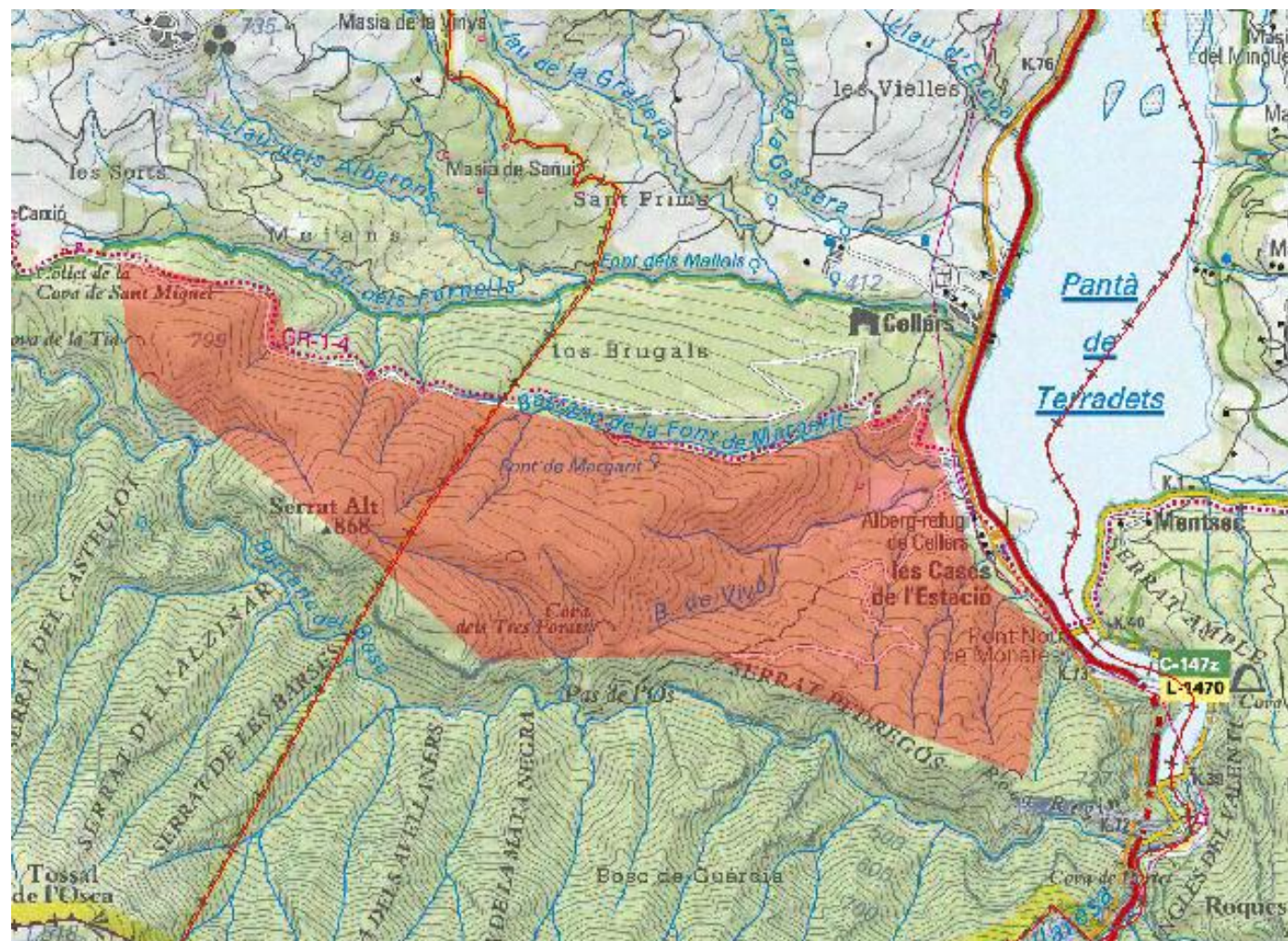
CERDANYA: Urús / Riu de Cerdanya / Prats i Sansor 150+250 ha
(Helicòpter)



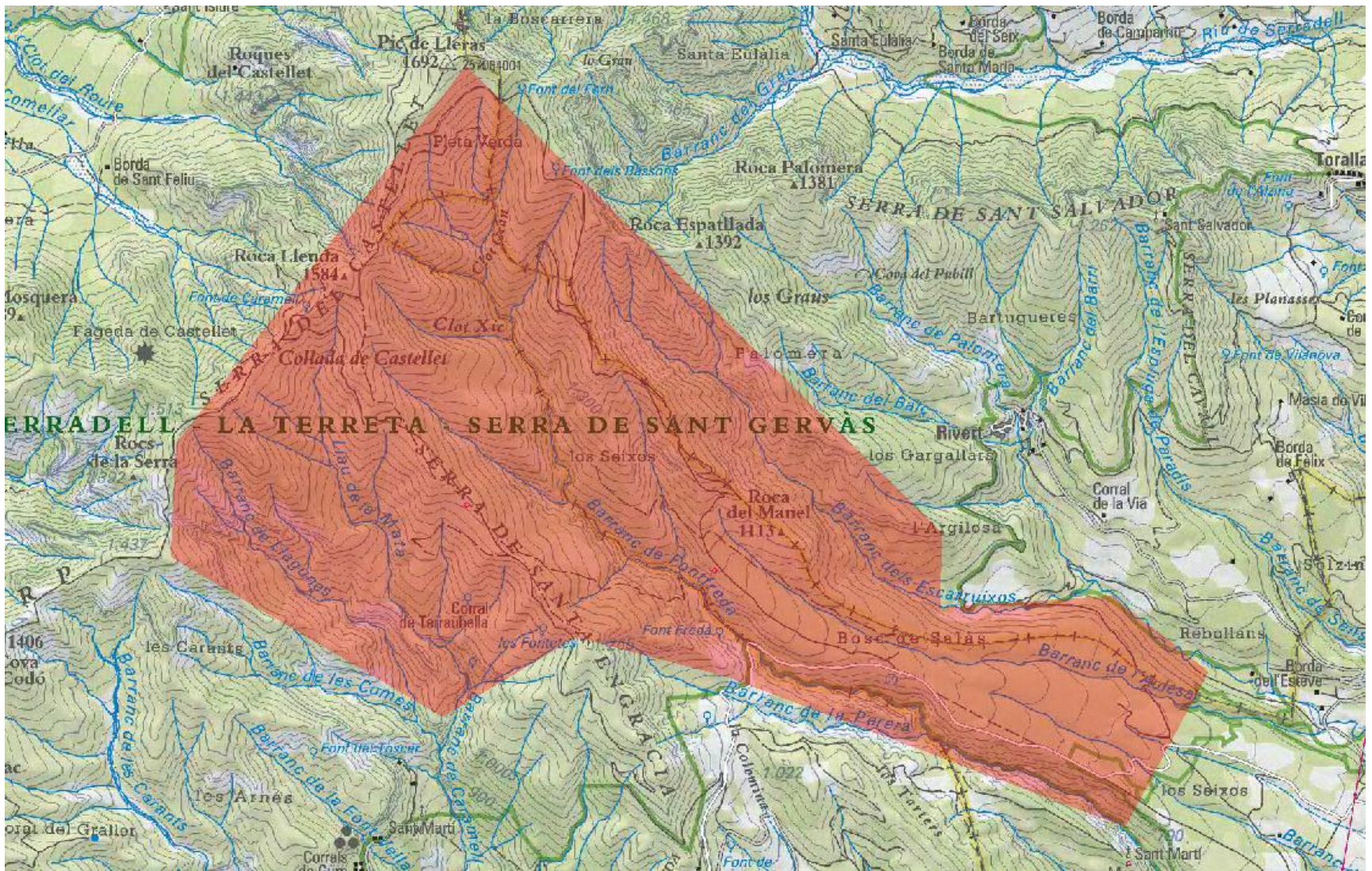
CERDANYA: Bolvir 50 ha
(Helicòpter)



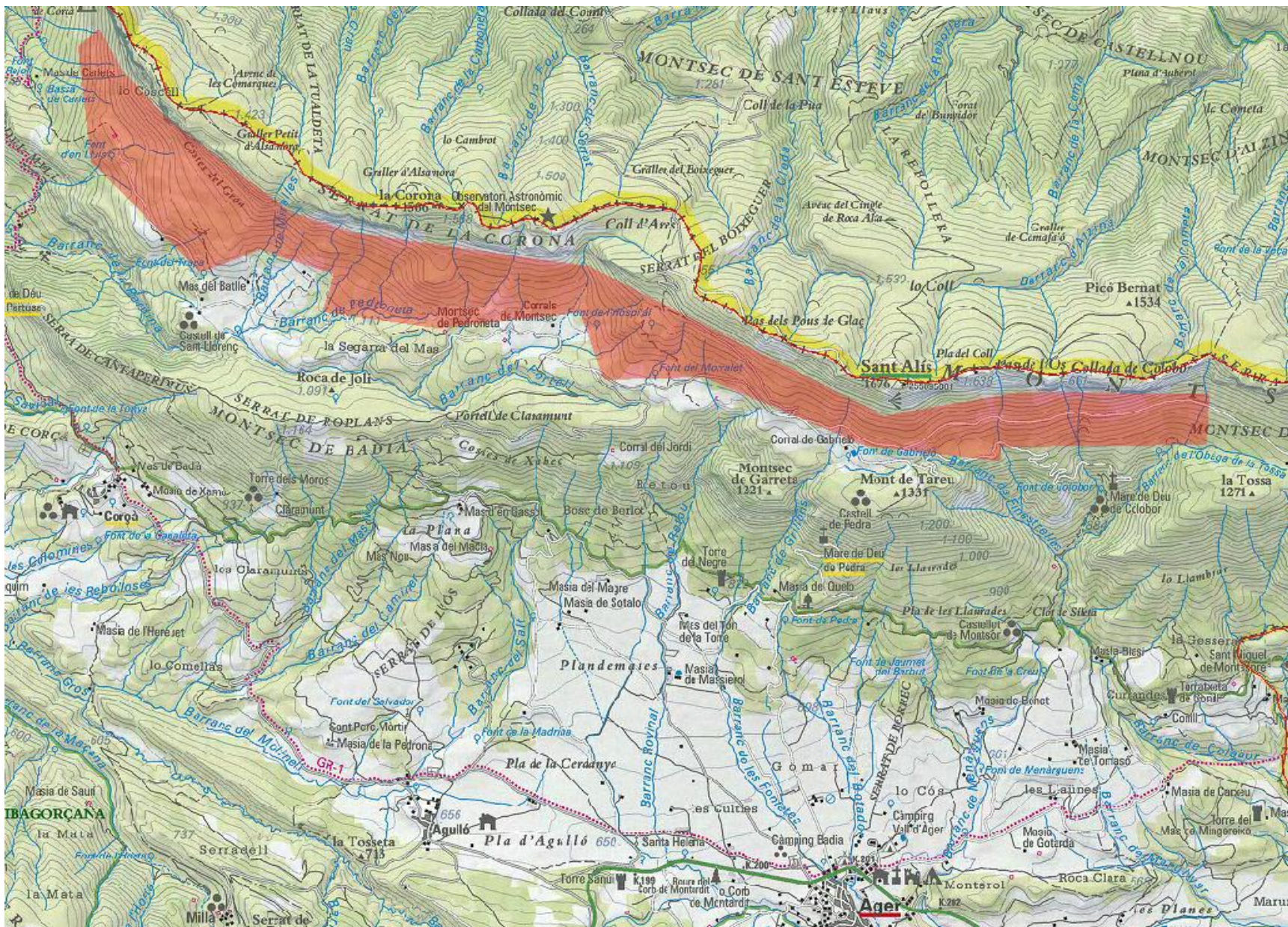
CERDANYA: Bellver de Cerdanya / Prullans: 300 + 100 ha
(Helicòpter)



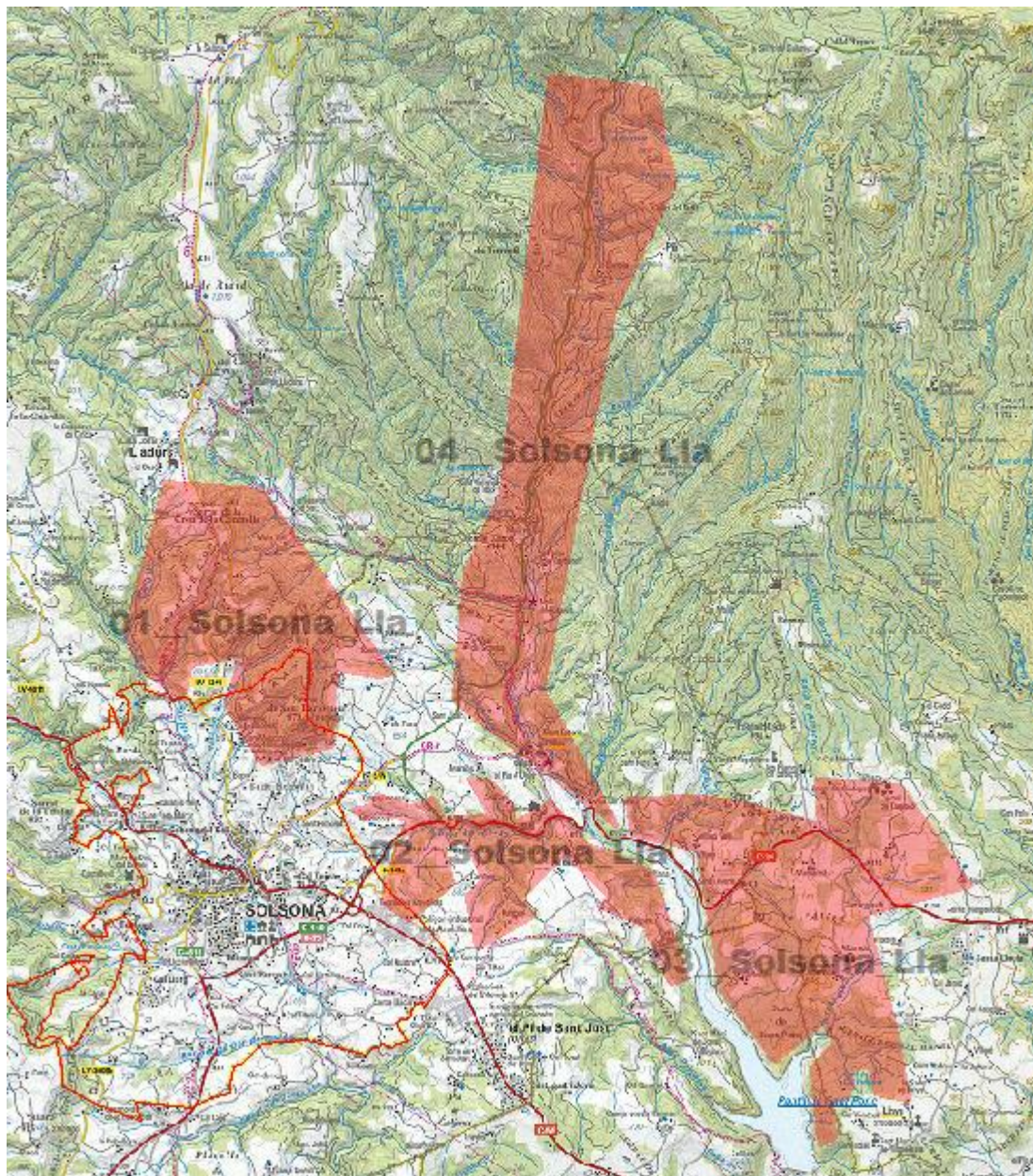
Pallars Jussà: Castell de Mur/St Esteve Sarga 400 ha (Helicòpter)



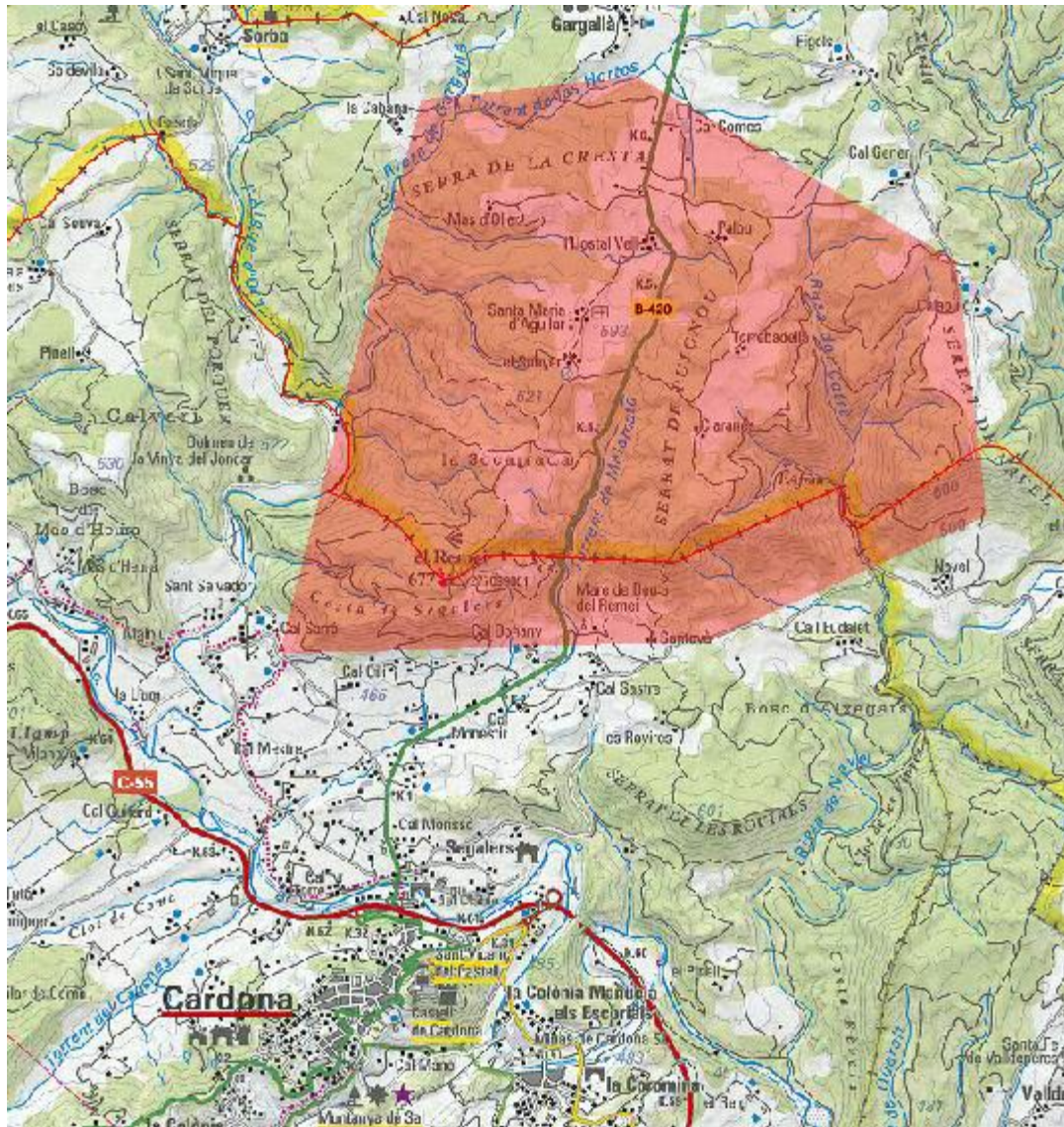
Pallars Jussà: Conca de Dalt/Salàs de Pallars/Tremp 1.000 ha (helicòpter)



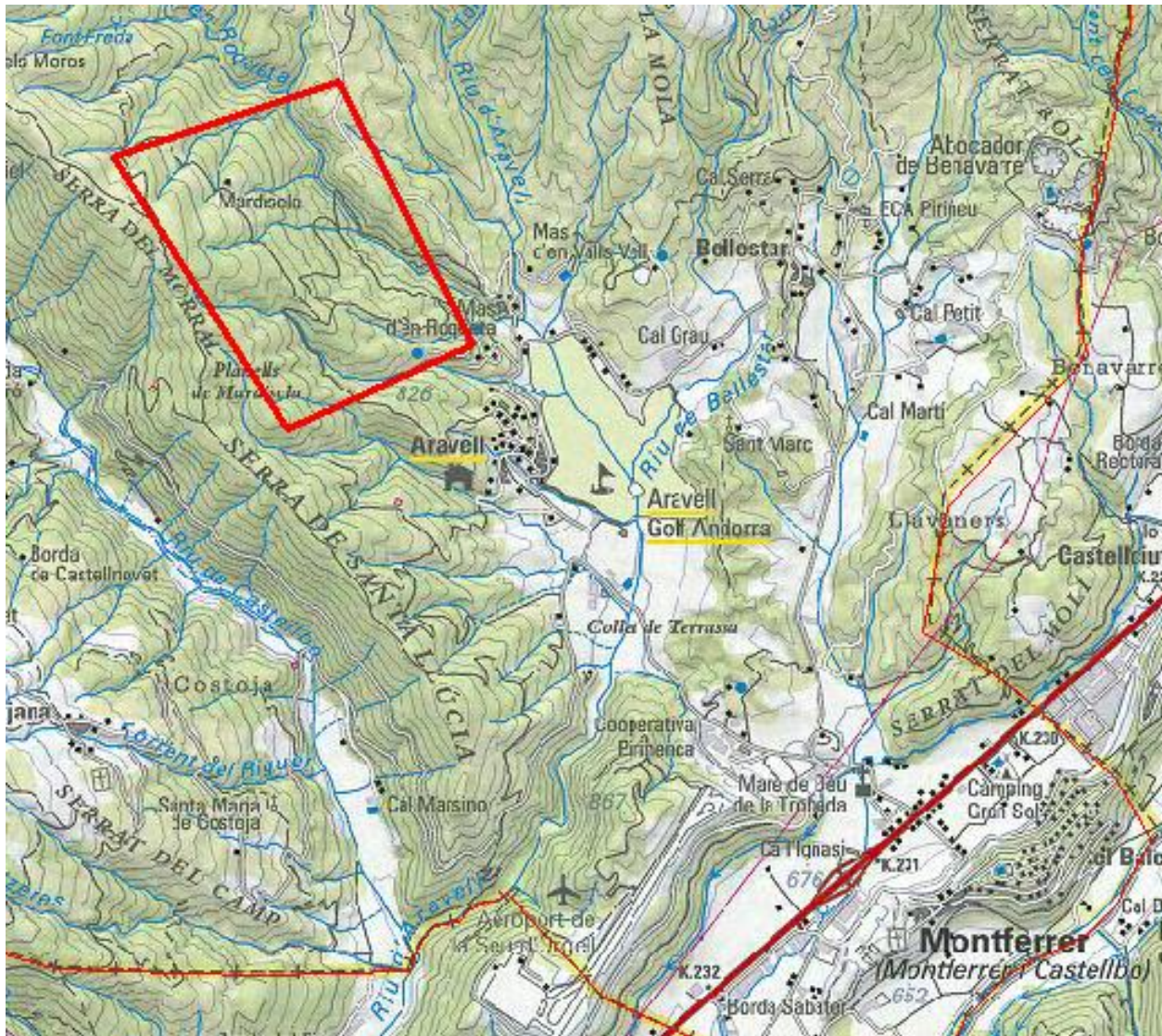
NOGUERA: Àger 400 ha
(Helicòpter)



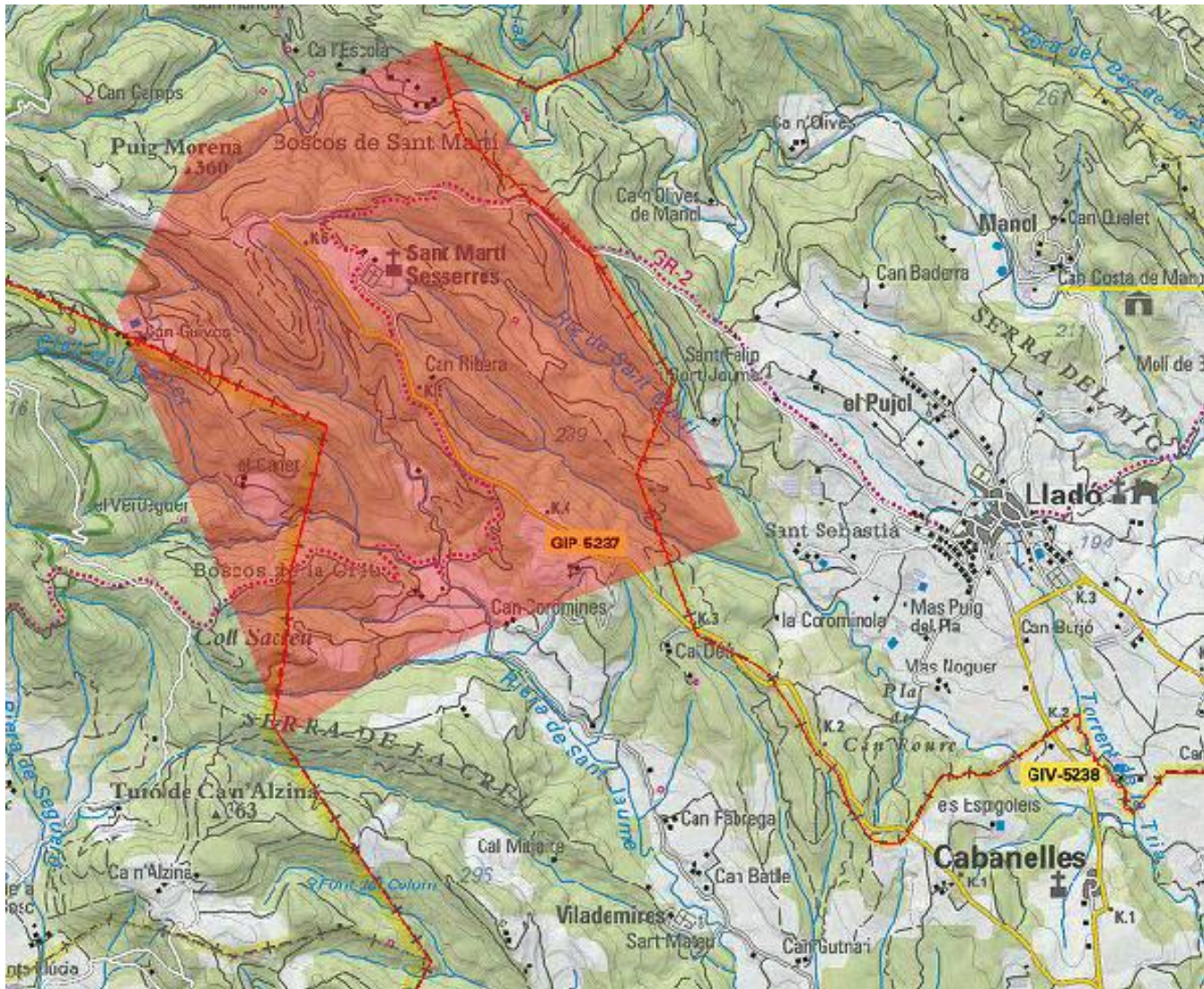
SOLSONÈS:
Solsona/Lladurs/Olius/Navés
01_600 ha
02_250 ha
03_500 ha
04_1000 ha
(helicòpter)



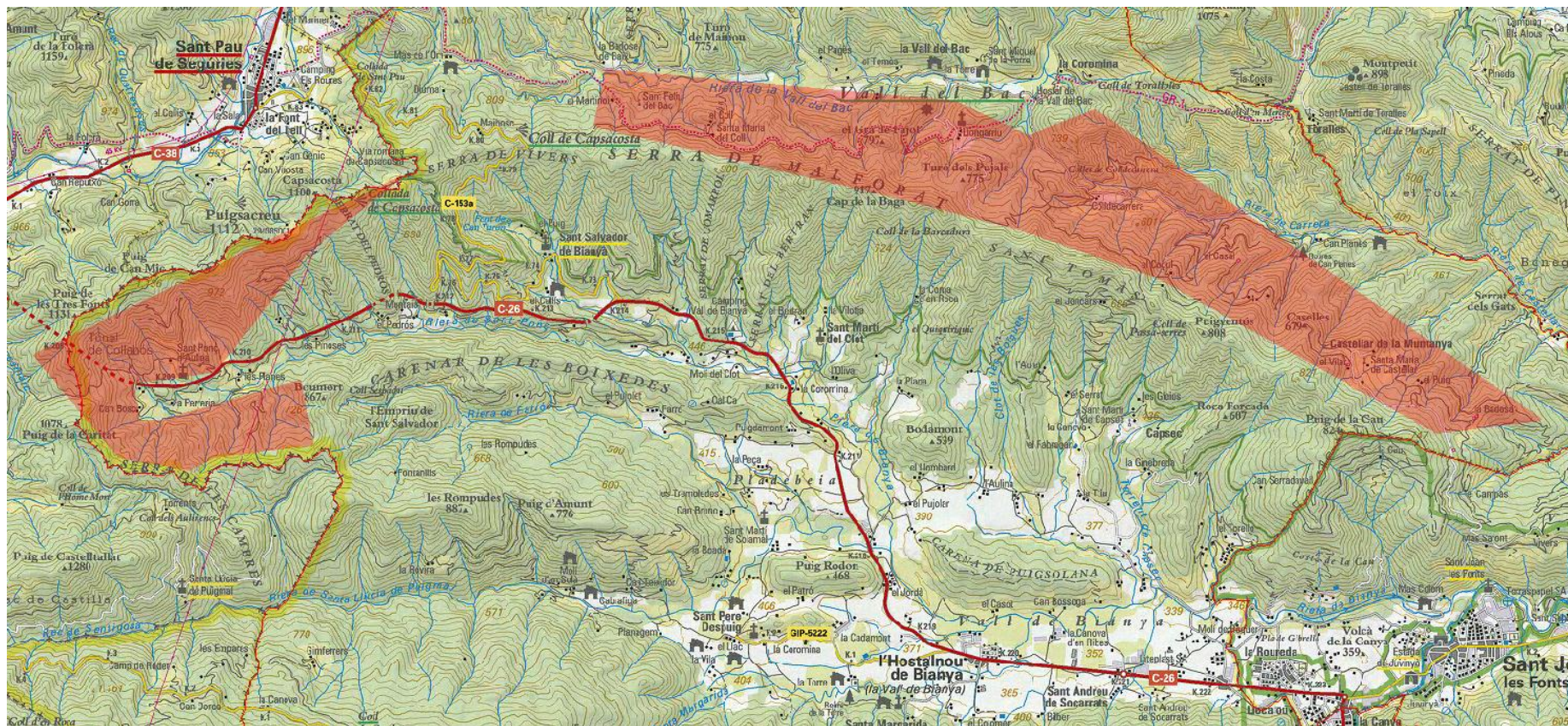
BERGUEDÀ:
Montmajor: 900 ha
(helicòpter)



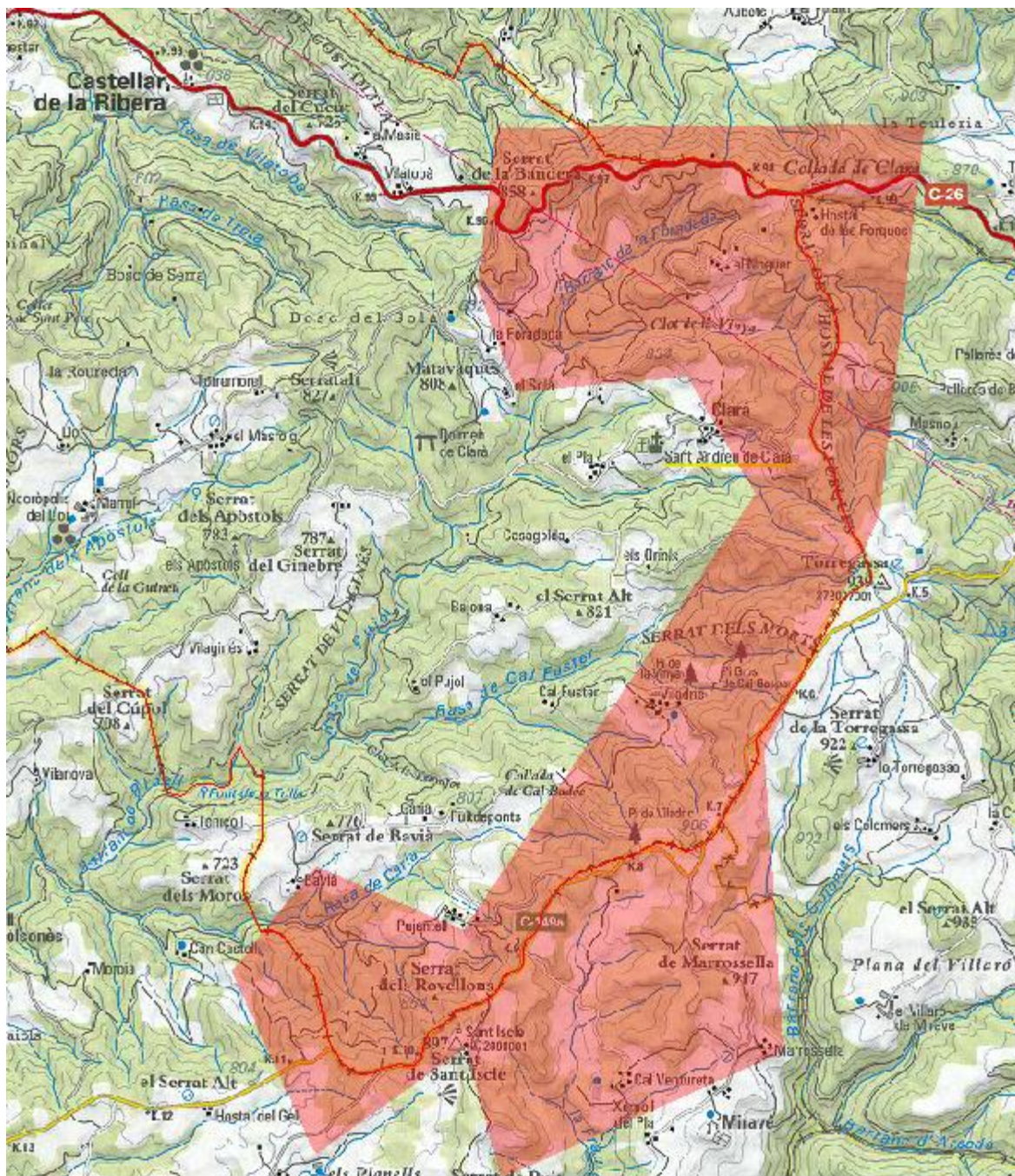
Alt Urgell: Montferrer Calibració 100Ha (avió)



ALT EMPORDÀ:
Cabanelles: 600 Ha (Avió)

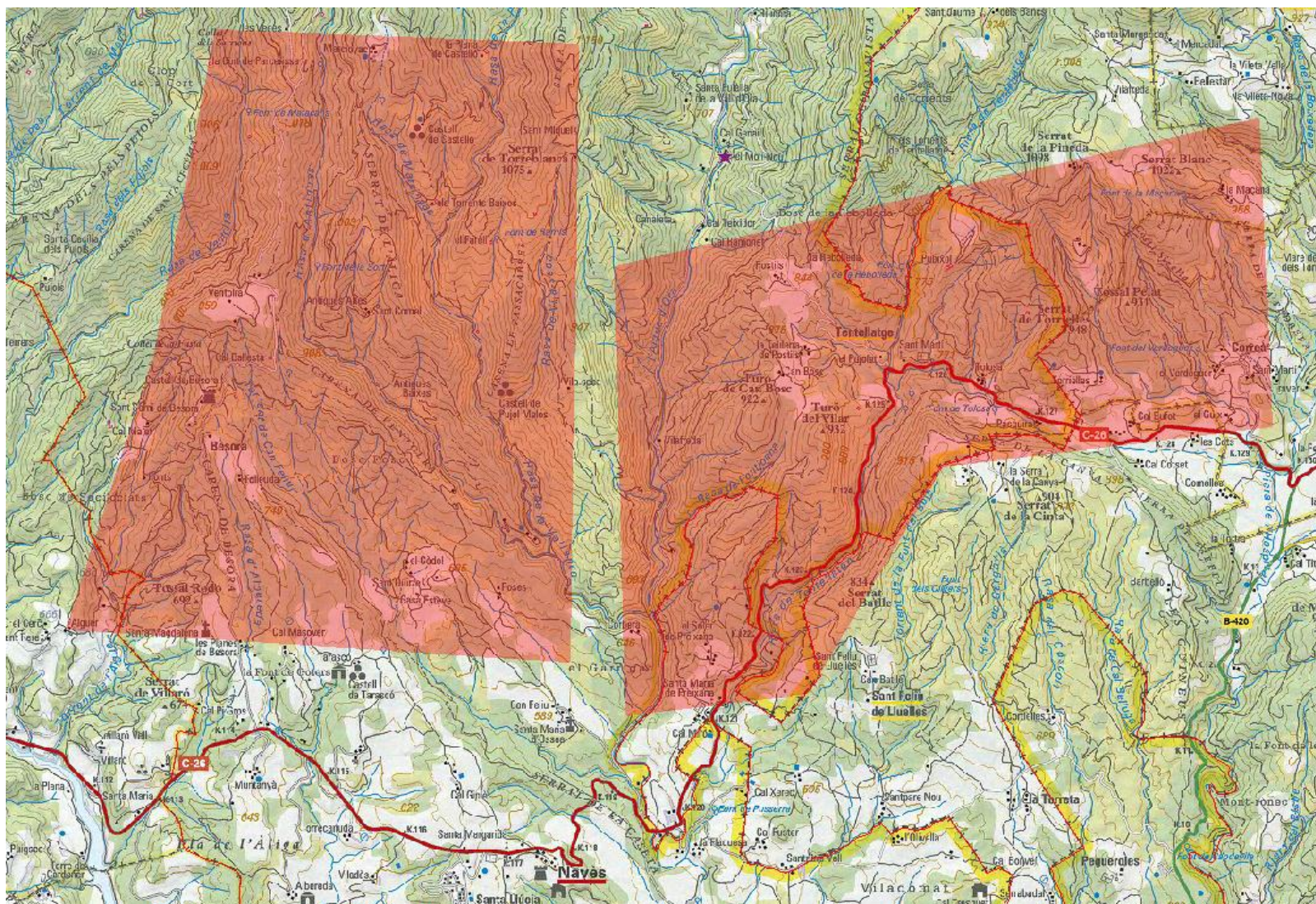


GARROTXA:
 la Vall de Bianya: 300 + 800ha (avió)



SOLSONÈS:

Castellar de la Ribera 600 ha
(avió)

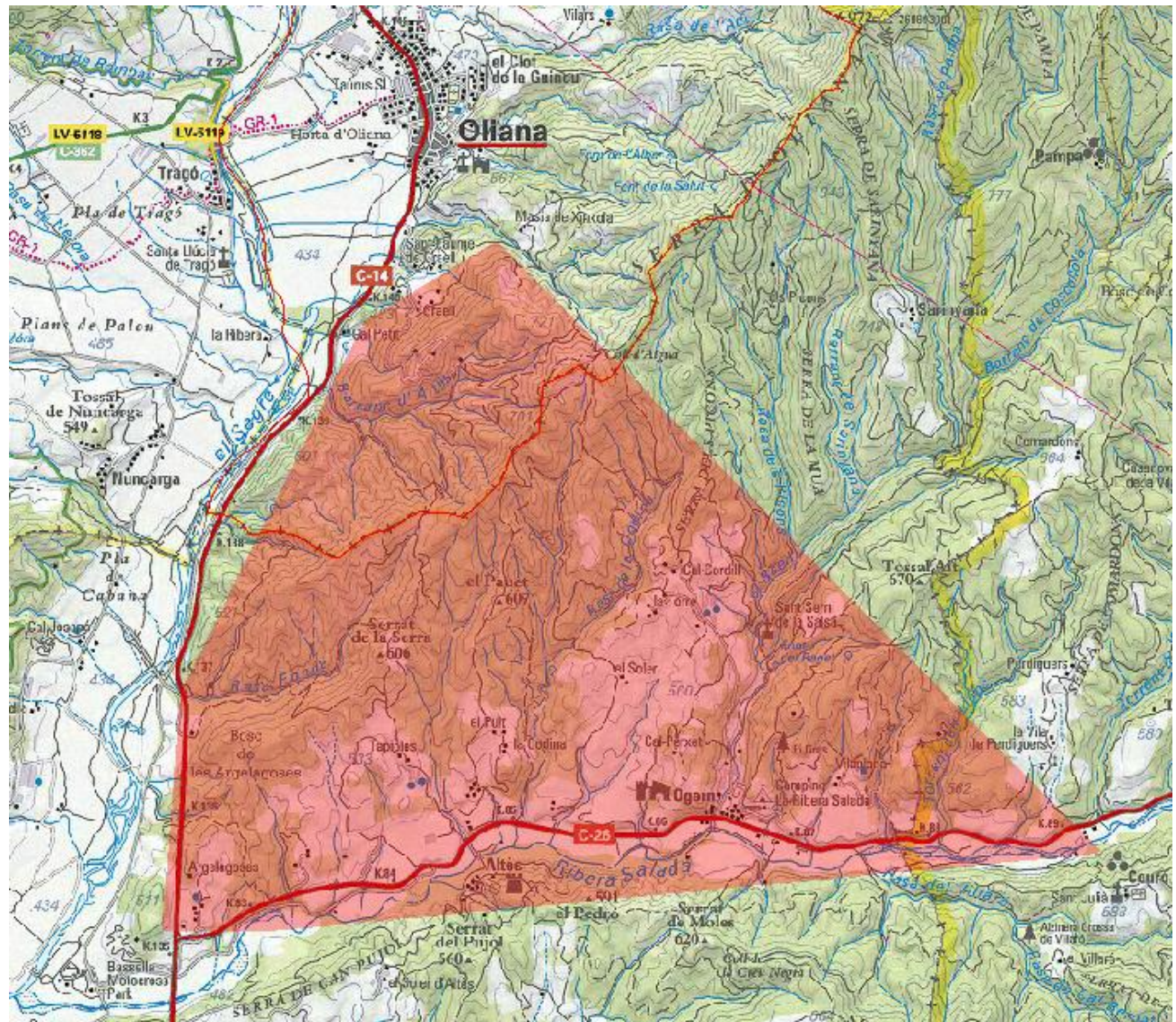


SOLSONÈS / BERGUEDÀ:

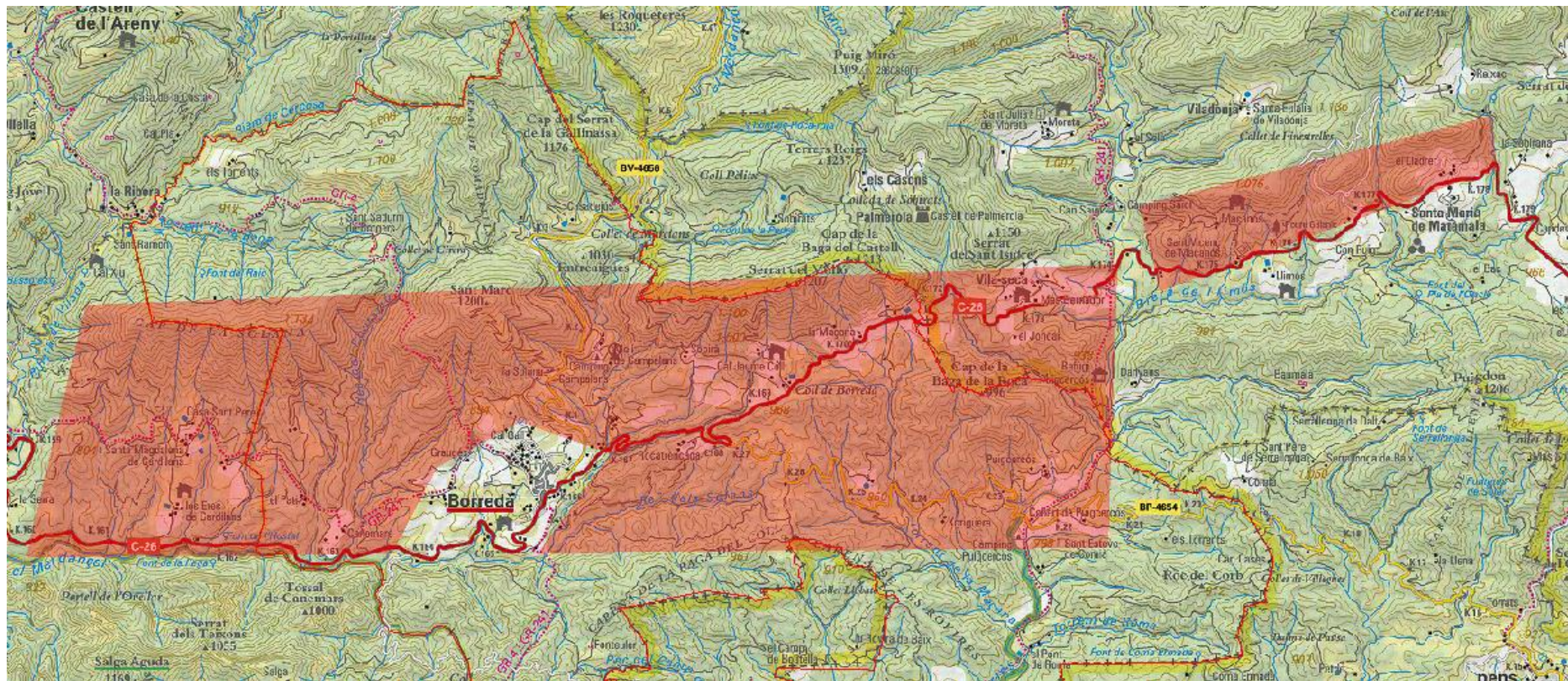
Navés/Montmajor/l'Espunyola

01_Navés:2.200 ha (Avió)

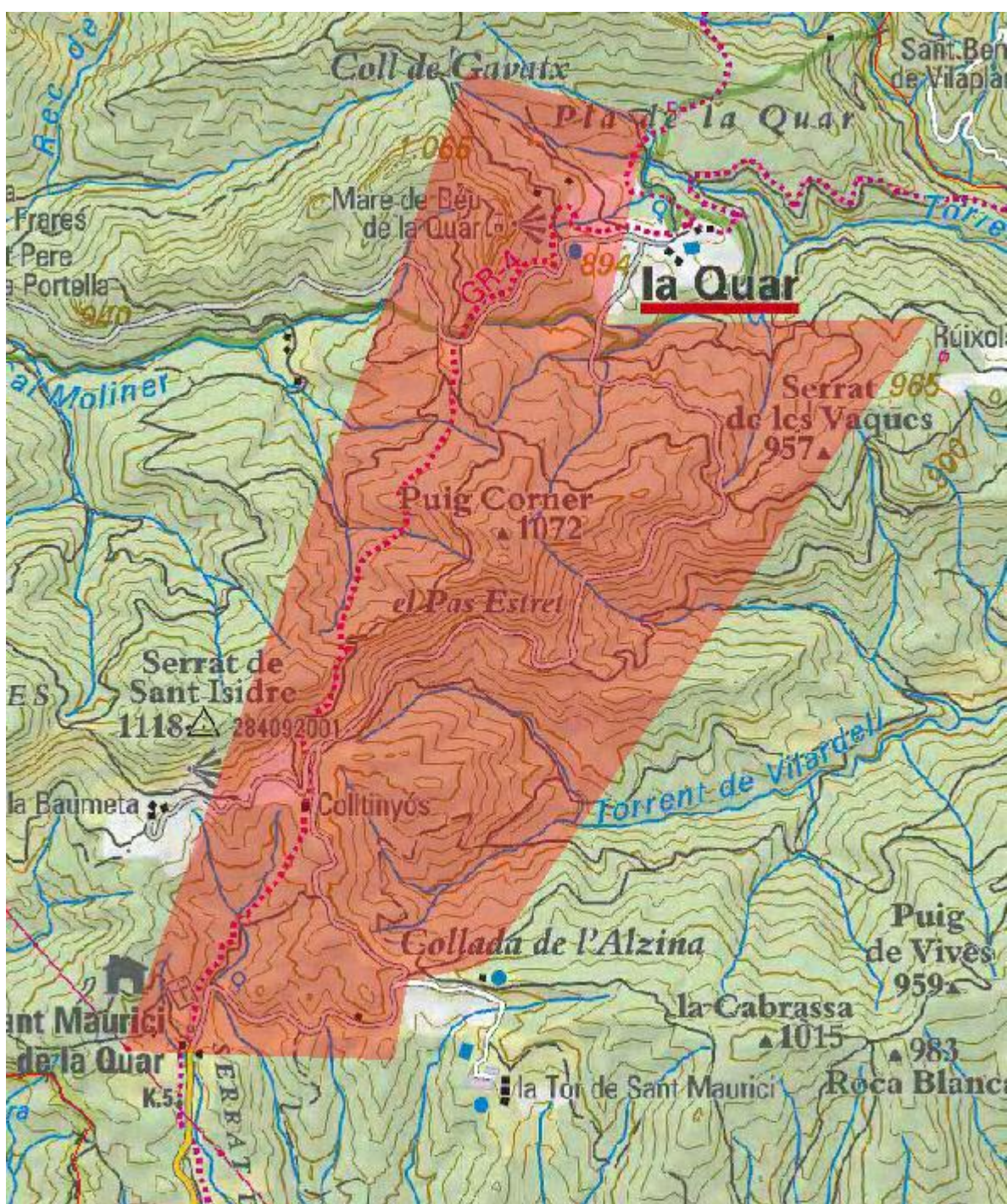
01_Navés_Montmajor_L'Espunyola: 1.800 ha (Avió)



ALT URGELL:
Oliana/Basella: 1000 ha (avió)



BERGUEDÀ:
Borredà/Les Lloles: 1900 ha (Avió)



Berguedà:
La Quar
300 ha (Avió)